



MARCH | VOLUME #38

KAHNAWÀ:KE TOURISM

Donation to Kanatahkwen:ke | Bell Center Indigenous Celebration | Haudenosaunee Tourism Connections | 10th Annual Maple Food Fest | Maple Meets Influence | and more!



NEW BEGINNINGS: LESSONS FROM MIDWINTER

The Mid-Winter ceremonies mark an importance time of renewal, gratitude, and balance within our community.

In this special Kwakaratón:ni episode, Ahonwakerene Stacey shares teachings about the 13 Moon Cycle and the importance of living in harmony with nature.

While ceremonies remain private, this conversation offers a meaningful glimpse into the values that guide us. Tune in at Kahnawaketourism.com or Kahnawakenews.com to enjoy this episode together.

RACING ON THE ICE

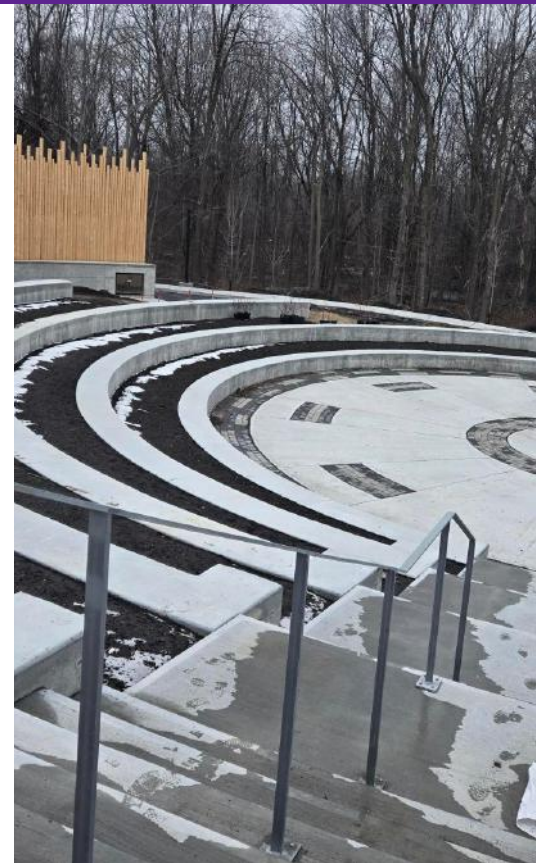
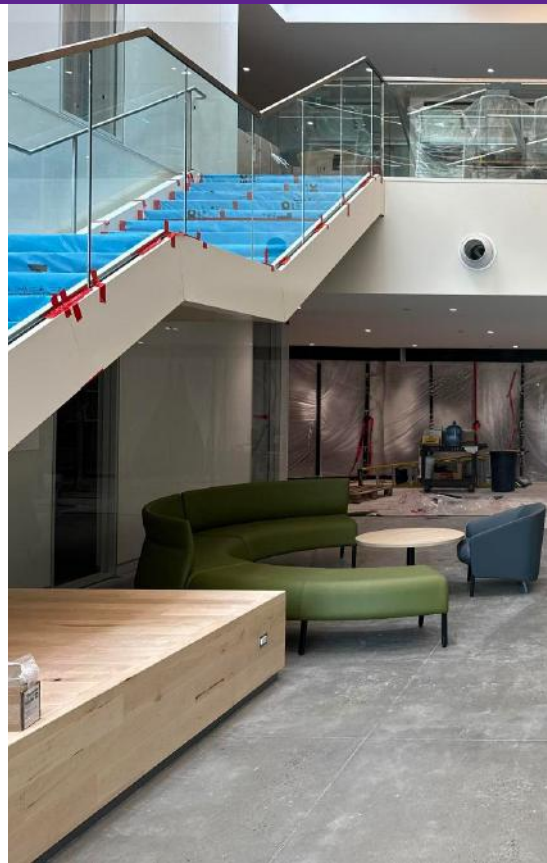
As the ice begins to melt, we wrapped up another exciting ice racing season in Kahnawa:ke!

In our latest Kwakaratón:ni episode, Bryar Lawrence shares his journey as a young entrepreneur leading the organization of this thrilling winter sport. From custom-built cars to racers from neighbouring communities, it's a one-of-a-kind experience on the frozen river!



**TUNE INTO OUR
PODCAST**





\$500,000 DONATION TO KANATAHKWÈN:KE

A major boost was recently announced for the Kanatahkwèn:ke Cultural Arts Center, as Kruger Energy, through the Des Cultures Wind Farm partnership with Kahnawà:ke Sustainable Energies, contributed \$500,000 toward the project. The wind farm itself is a strong example of collaboration between Indigenous communities and industry. This donation reflects the spirit of partnership; reinvesting success back into the community and supporting initiatives that preserve language, culture, and identity.

From a tourism perspective, this investment is especially meaningful. Kanatahkwèn:ke is not only a cultural hub, but also a future destination that will welcome visitors from near and far, creating opportunities to share Kanien'kehá:ka stories, traditions, and experiences on a larger scale. As tourism continues to grow in Kahnawà:ke, projects like this strengthen the foundation for sustainable, community-driven

development—ensuring that visitors leave with a deeper understanding of who we are, while directly supporting local economic growth and cultural revitalization.

SOFT OPENING

The Kanien'kehá:ka Onkwawén:na Raotitióhkwa Language and Cultural Center (KORLCC) will be hosting a soft opening of its new office spaces at Kanatahkwèn:ke on April 1 from 12 to 4. The event will include a tobacco burning, ribbon cutting, and welcoming ceremony to mark this important milestone. Community members are invited to attend and take part in beginning this new chapter for the cultural center within Kanatahkwèn:ke. This opening is specific to the KORLCC office spaces only, with an official grand opening to follow, once the theatre and museum spaces have been fully completed.



BELL CENTER INDIGENOUS CELEBRATION

Kahnawà:ke was invited to participate in the annual Montreal Canadiens Indigenous Celebration at the Bell Center on March 21. Screaming Chef’s Ryland Diome was up for the challenge!

Bringing his signature flavors and creativity to one of hockey’s most iconic venues, Ryland proudly represented Kahnawà:ke on a major stage. Preparing approximately 240 dishes over the course of the event, he delivered a memorable culinary experience to fans attending the celebration. While he admitted to feeling some initial concern about managing a potential rush of orders, the evening unfolded smoothly.

“It was a joy to share my food with everyone else, that’s what makes what I do so much fun!”
Ryland shared.

The event drew strong support from the community, with many Kahnawa’kehró:non and devoted Montreal Canadiens fans showing up to cheer on both their team and one of their own. For Ryland, seeing familiar faces in the crowd made the experience even more meaningful.



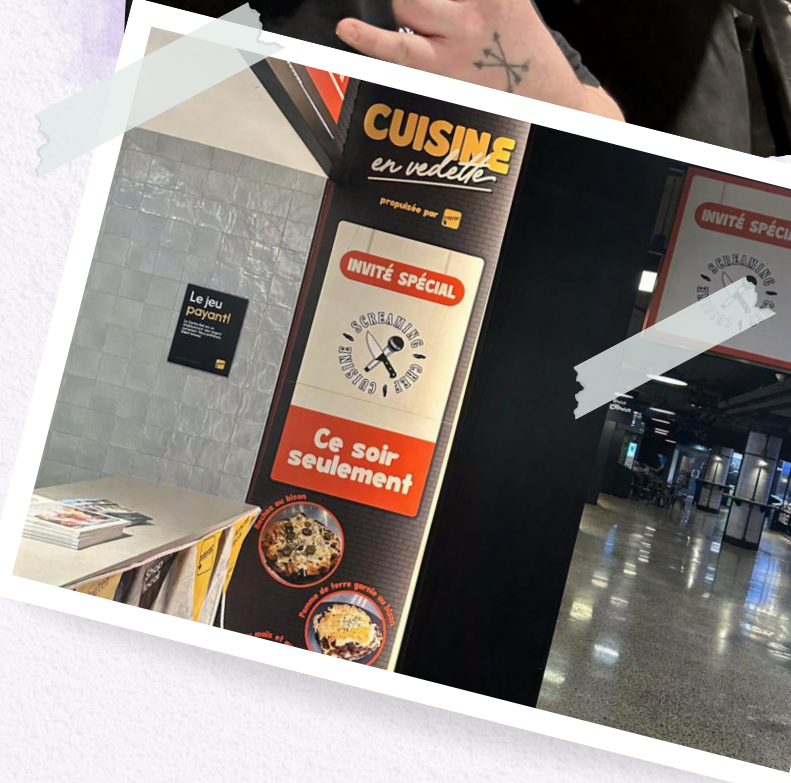
BELL CENTER INDIGENOUS CELEBRATION

Reflecting on the opportunity, he described the evening as a great success and an unforgettable experience. He is already looking forward to future collaborations that allow him to continue showcasing his work and representing the community.

This partnership was made possible through the strong relationships built by Kahnawà:ke Tourism in collaboration with Indigenous Tourism Quebec.

“They contacted TAQ, TAQ contacted us,” explained Kimberly Cross, Tourism Development Manager. “When we look at tourism development and enriching people’s experiences, and educating others about our people and culture, these types of activities are a great way to boost that reach, gain exposure for our local small businesses, and help our community grow. We’re grateful for the work that TAQ does—continuously supporting and ensuring that we have a space where we are heard and seen.”

Events like the Indigenous Celebration not only highlight Indigenous talent and entrepreneurship, but also strengthen cultural connections and create meaningful opportunities for communities like Kahnawà:ke to shine on larger platforms.





STRONGER TOGETHER HAUDENOSAUNEE TOURISM CONNECTIONS GROW

Since attending the Haudenosaunee Tourism Summit in Akwesasne last year, the collaboration continues within the Haudenosaunee Tourism Network!

On March 28th-29th, Bronwyn joined Akwesasne Travel’s Misty Tarbell at the Salon Aventure & Plein Air Montréal, promoting:

- Cultural tours
- The Juried Art Market (July)
- Pow Wow celebrations (September)

It was an inspiring weekend filled with new connections and meaningful conversations—many visitors engaging with Indigenous communities for the very first time.

These moments remind us: tourism is more than travel—it’s connection, education, and shared understanding. Tourism is a powerful tool to connect with guests on the land and to educate for a better future together.

We had a wonderful time and had the chance to chat with community members at the event and meet so many new potential visitors. We look forward to continuing to grow with our tourism partners across the Confederacy.

Niawenhkowa to Akwesasne Travel for the invitation!



10TH ANNUAL MAPLE FOOD FEST

Throughout the month of March, Kahnawà:ke Tourism proudly hosted the 10th Annual Maple Food Fest!

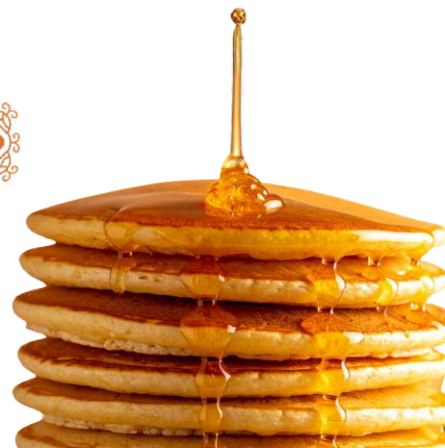
This community-wide celebration highlighted the sweet creativity of maple, with eight participating businesses offering their own unique maple-inspired specials: Tota Ma's, Cakery Bakery, Rowy's, Kahnawake Brewing Co., Kahnawake Sports Complex Snack Bar, Roosters Express, Screaming Chef, and Rooted Revival.

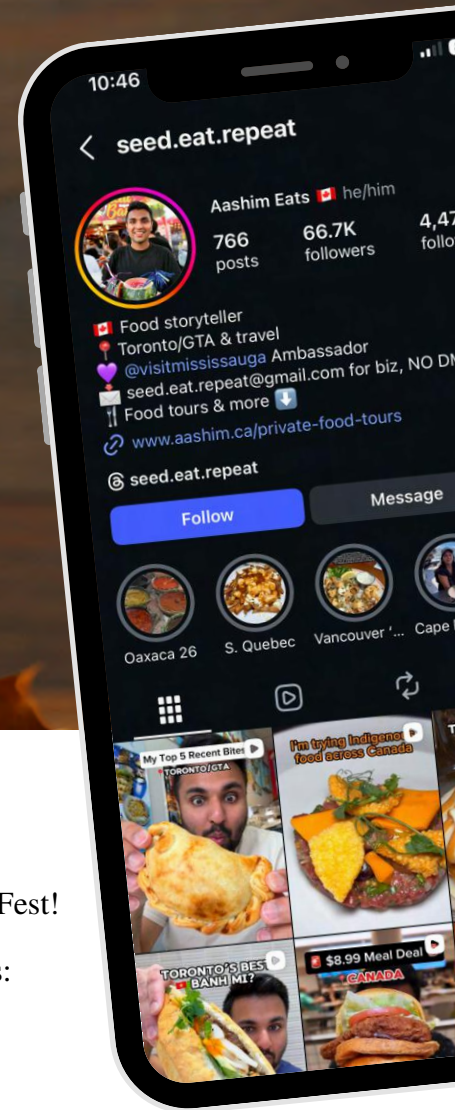
As part of the festivities, the Sugar Shack Brunch took place at the Kahnawà:ke Survival School, sponsored by Playground Cares. Their team prepared and served a delicious brunch enjoyed by many. The event also featured 20 vendors from in and around the community, live music, face painting, and a charming horse-and-buggy ride through the old campus.

All proceeds from the event, totaling \$4,628.00, will be donated to supporting the school's cultural programming.

Congratulations to our door prize winner, Kwawennawi, who received a \$50 maple-themed basket from Kaienthókwen!

Thank you to everyone who participated and helped make this year's Maple Food Fest a success!





MAPLE MEETS INFLUENCE

We were thrilled to host Instagram influencer Seed.eat.repeat during Maple Food Fest!

With Indigenous Tourism Quebec, Aashim explored some delicious local flavours:

- Maple-sweetened strawberry juice & maple lattes
- A fresh strawberry salad with wild rice maple dressing
- Savoury squash fritters with spicy maple syrup & goat cheese

The day was full of flavour and connection—we can't wait to see the final content! Aashim joined us last season for Harvest Fest and we hope to have him back in the community this summer!

A MAPLE EXPERIENCE WITH INTERNATIONAL GUESTS

We welcomed Tourism Montérégie and 5 journalists from France for a full-day maple experience!

The journey included:

- A maple breakfast at 207 Steak & Seafood
- Insightful conversations on culture and history
- A visit to family-run maple operation at Caughnawaga Convenience

- A hands-on look at the syrup-making process
- Despite a frozen forest, the learning—and connections—flowed freely!

The day ended with shared plates and warm hospitality before guests continued their Quebec journey to Strom Spa Mount St Hillaire. Nia:wen to Fred from Tourism Montérégie and Andrew from Indigenous Tourism Quebec for bringing these opportunities to us!

STEPPING INTO TOURISM

Welcoming our stage student, Valentina! For the next few weeks, we're excited to welcome our stage student, Valentina, from Dawson College's CRLT program.

Valentina has been working alongside the Kahnawà:ke Tourism Team, contributing to events like the Maple Food Fest and the Sugar Shack Brunch. She's been putting her classroom knowledge into action as she takes on the role of Tourism Clerk.

We're grateful to have her on board and look forward to supporting her as she completes her stage hours over the coming weeks. Welcome, Valentina!



SOCIAL ENTERPRISE TRAINING

Tourism staff recently participated in a one-day Social Enterprise Training hosted by Tewaohnni'saktha's Workforce Development team. The training introduced the core principles of social enterprise—business models that balance financial sustainability with social, cultural, and community impact. Throughout the day, participants explored key topics such as identifying community needs, building mission-driven business plans, measuring social impact, diversifying revenue streams, and strengthening governance and accountability practices.

The session also sparked important reflection on our own work. It became clear that tourism in Kahnawà:ke already operates much like a social enterprise—prioritizing cultural preservation, community benefit, and local economic growth alongside visitor experiences. This perspective reinforced how we approach our work moving forward, and we will be using this knowledge to guide future tourism development, partnerships, and long-term planning in a way that continues to benefit the community as a whole.



KAHNAWÀ:KE WELCOME CENTER HOURS

MON	8:30AM - 4:00PM
TUES	8:30AM - 4:00PM
WED	8:30AM - 4:00PM
THU	8:30AM - 4:00PM
FRI	8:30AM - 4:00PM
SAT & SUN	CLOSED

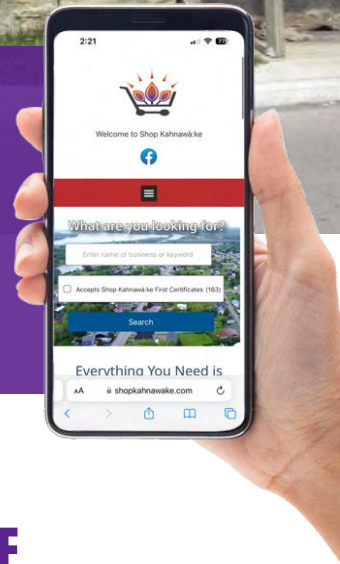
WEEKENDS CLOSED AS OF DECEMBER 14TH

1 RIVER ROAD, KAHNAWÀ:KE QC, JOL 1B0

SHOP KAHNAWÀ:KE

Shopkahnowake.com

Shop Kahnowà:ke Gift Certificates are now available for purchase at the Welcome Center! Gift certificates can be given as a gift for that special occasion and can be redeemed in over 100 business locations in Kahnowà:ke. Visit the Shop Kahnowà:ke Facebook page and website for more information.



BOOK A TOUR WITH US

To experience all that Kahnowà:ke has to offer, we invite you to book one of our many fun and informative tours or join us at one of our many cultural events.

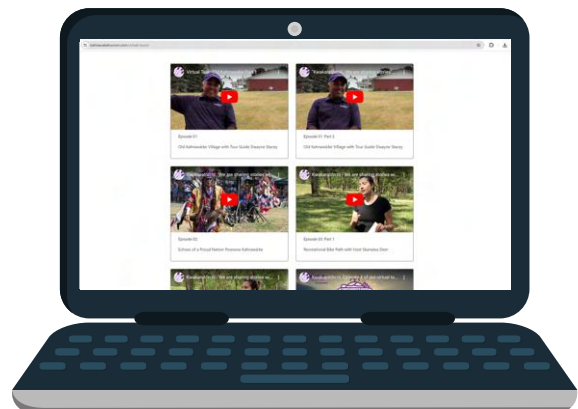


SCAN TO BOOK!



KAHNAWAKETOURISM.COM/BOOK-YOUR-TOUR

CHECK OUT OUR VIRTUAL TOURS ONLINE



KAHNAWAKETOURISM.COM/VIRTUAL-TOURS





1 Rd River, Kahnawà:ke, Quebec JOL 1B0
(450) 635-2929
info@kahnawaketourism.com

kahnawaketourism.com
tewa.ca
shopkahnawake.com



Tourisme
Kahnawà:ke
Tourism 

